

To Go Up on 115th Street Between First and Second Avenues

New Building in E. Harlem For Family Health Services

The Little Sisters of the Assumption Family Health Service, which offers a panoply of health and social services in East Harlem from a patchwork arrangement of five rented sites, has been looking for a place to build a home for more than 10 years.

Next month it will realize that goal when it breaks ground for a five-story building at 333 East 115th Street between First and Second Avenues. The building is expected to take a year to build, and cost about \$7 million.

"This will enable us to do what we say is the hallmark of our work, really integrate our services," said Sister Judith Garson, executive director of the organization, as she enumerated some of its programs: "health care, social services, English classes, parent support groups, an emergency food pantry, and services for children from birth to 3."

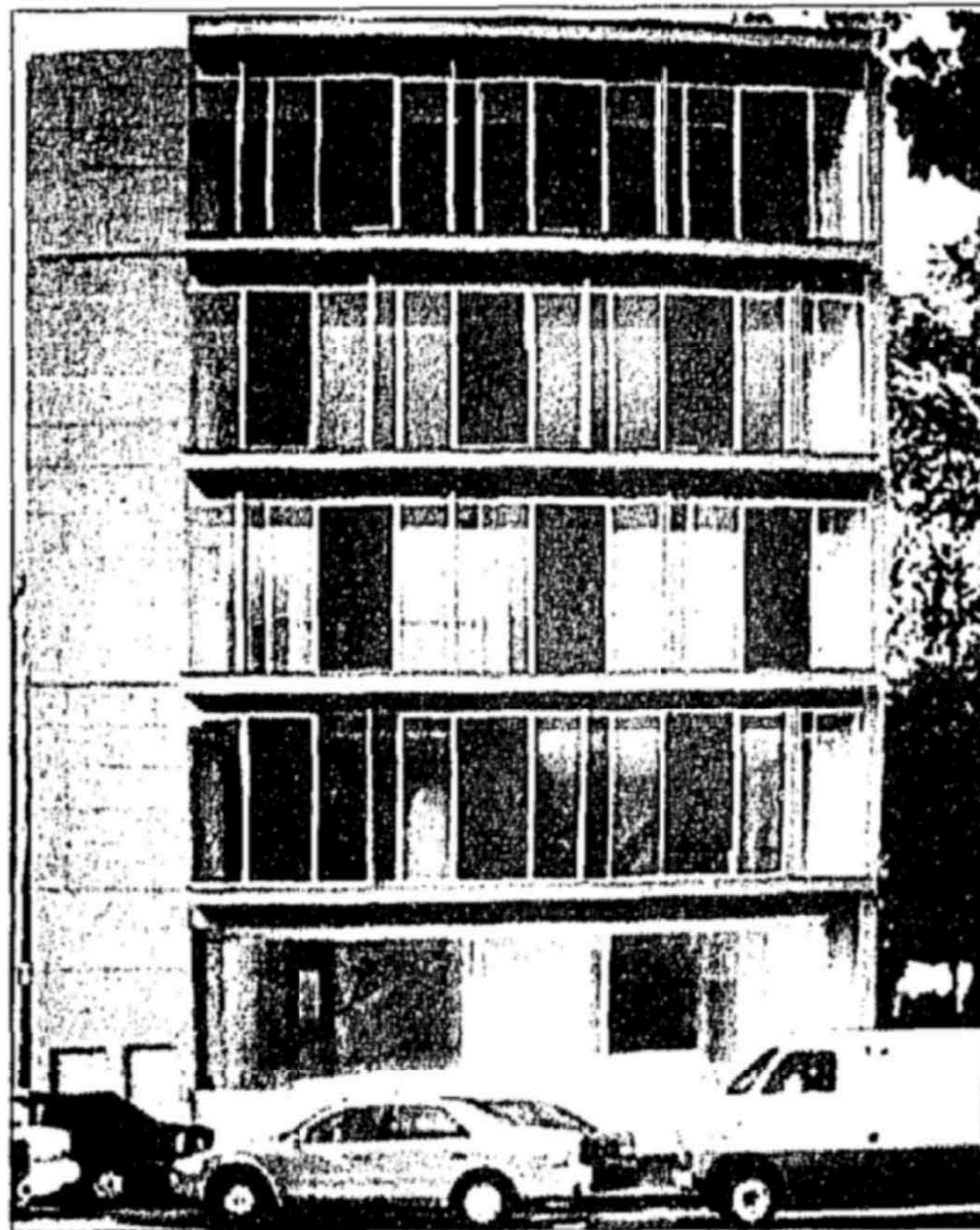
"If people come for one service and can use another, they can get it with minimum bureaucracy, but they have had to trail back and forth between sites," she said. "This will create a physical environment that will capture the spirit of what we do with fam-

ilies and will be an open, light, welcoming place. We serve the most vulnerable families so inevitably that means immigrant families."

To make it open, light and welcoming, said Peter L. Gluck, the architect on the project, the facade will consist of glass and ventilating panels. Interior support will be provided by trusses, making columns unnecessary. "That means walls can be dismantled and partitions moved as programs change," he said.

The structure is being designed to support two additional floors in the future.

The thrift shop will be on the ground floor. "That is a very popular community facility, and we wanted it to feel like a real shopping experience," said Mr. Gluck, whose Manhattan-based practice ranges from upscale residences to inner city schools and community centers. "We want the family health service to be accommodating to the community as opposed to what is often done in this context, something forbidding and institutional. The building is meant to be clearly modern. This is not a community interested in nostalgia." **NADINE BROZAN**



Peter L. Gluck and Partners

Little Sisters of the Assumption's new building.